

# Charlbury Grove, Ealing

Large scale rear extensions and reorganisation of a 19th Century detached family home.

LOCATION

*Ealing, London W5*

STATUS

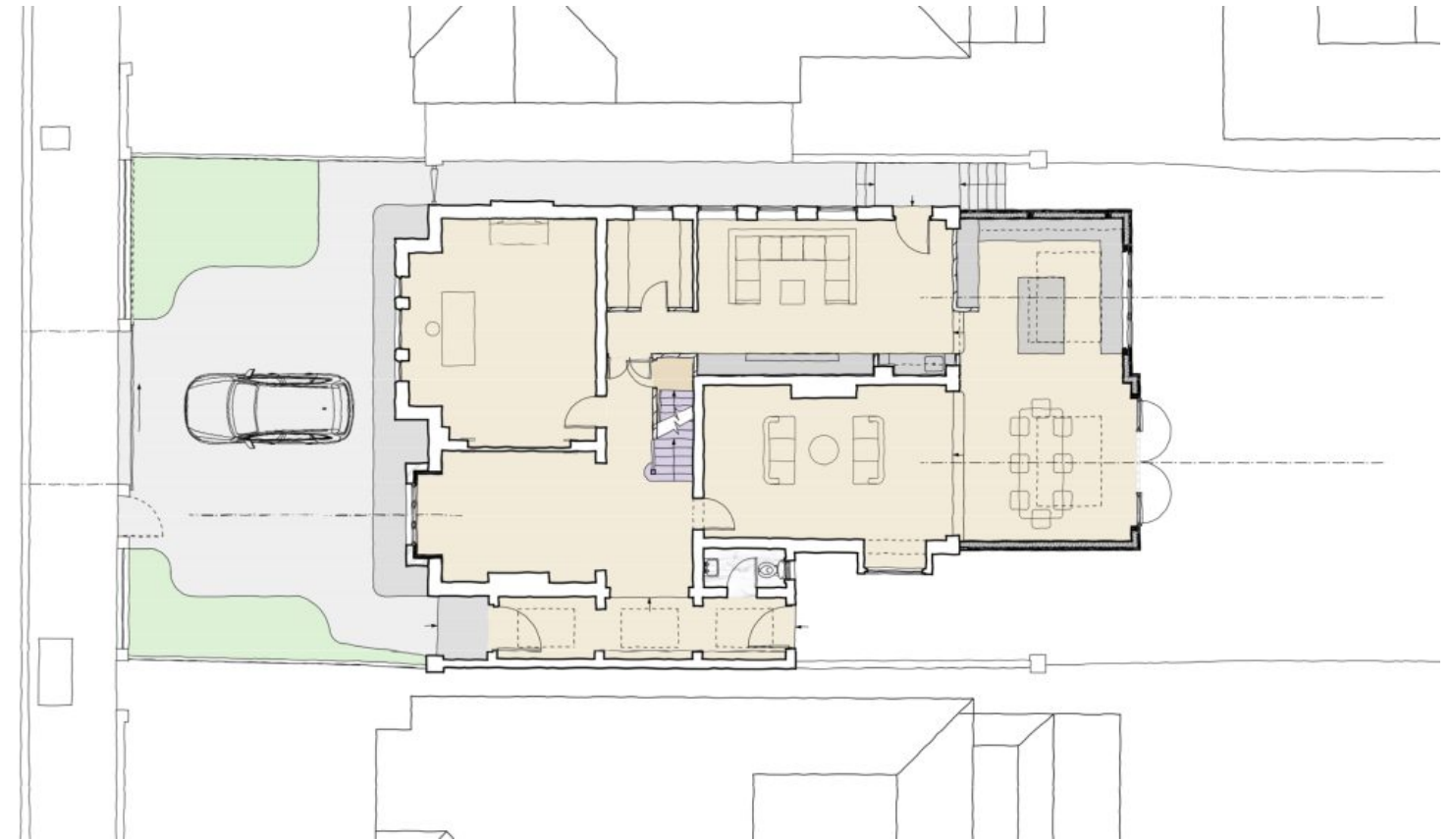
*Detailed Design*

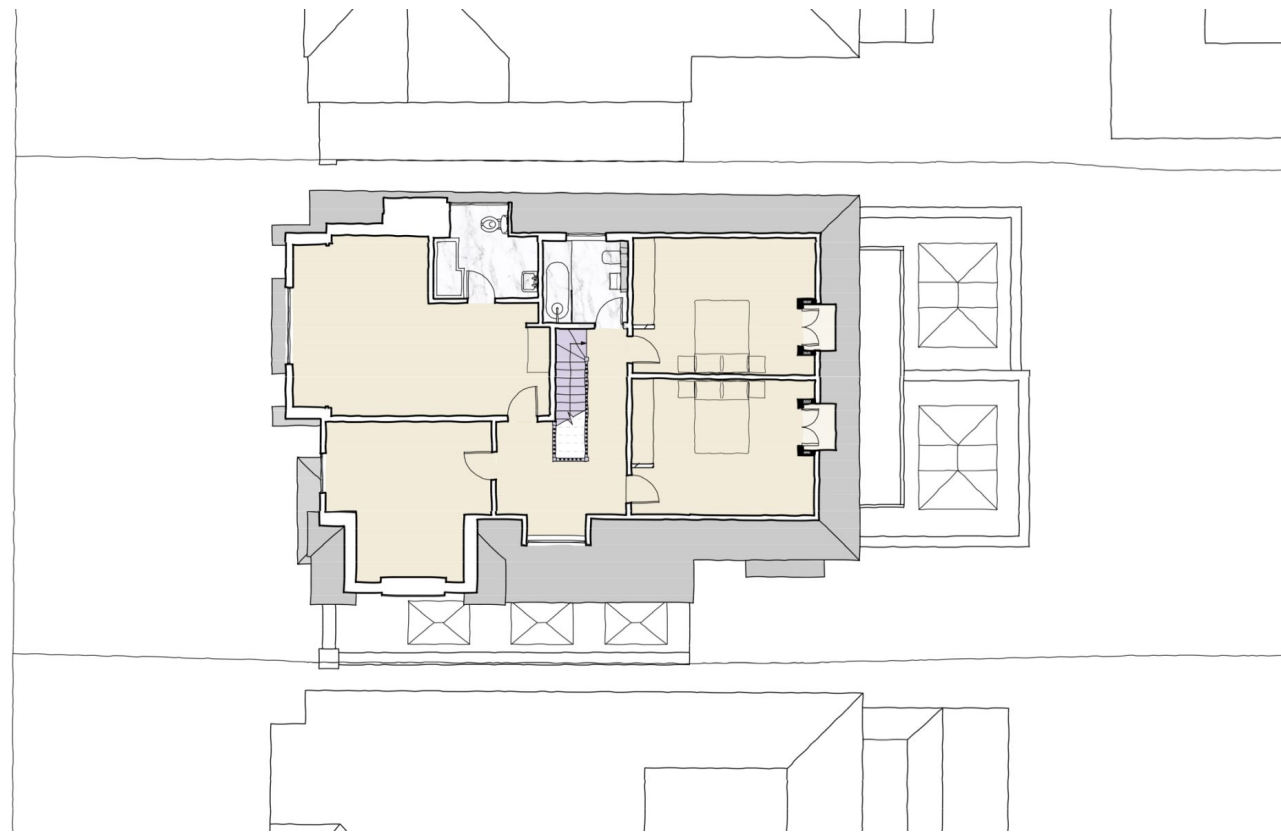
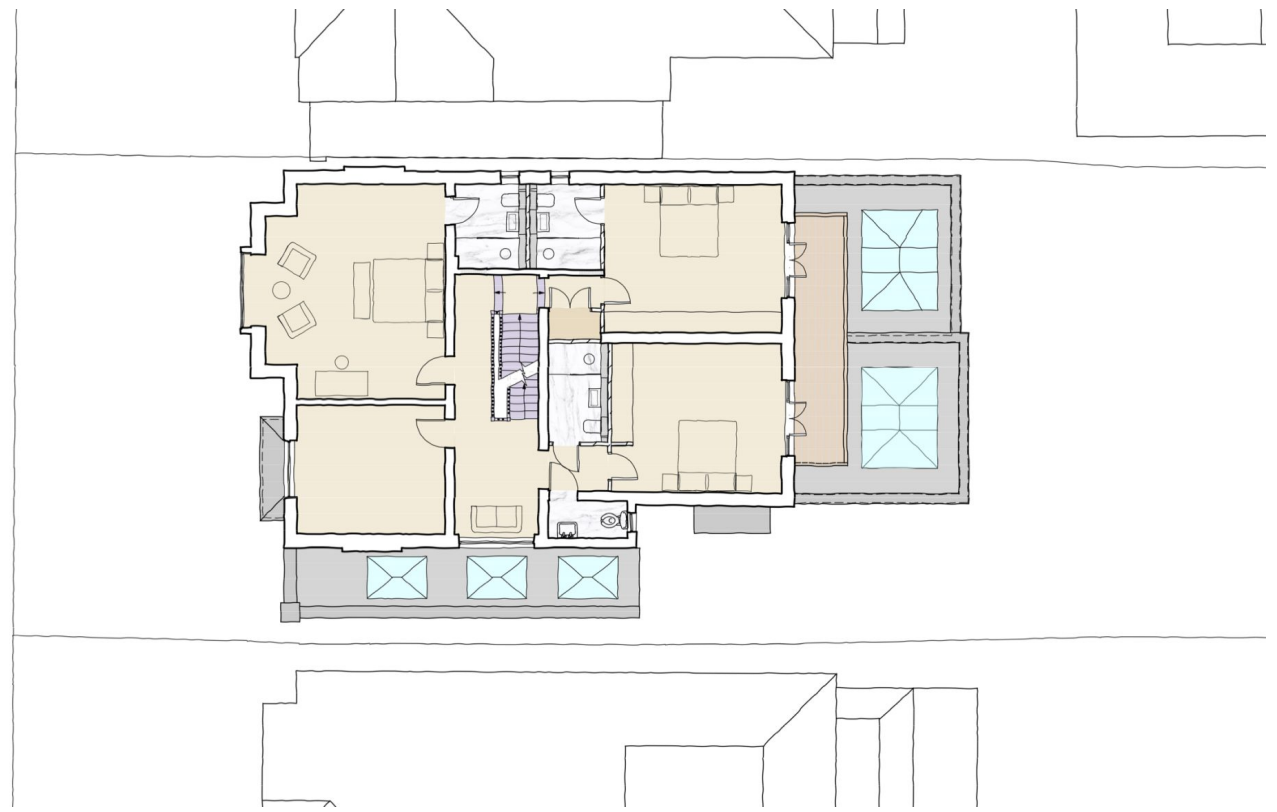
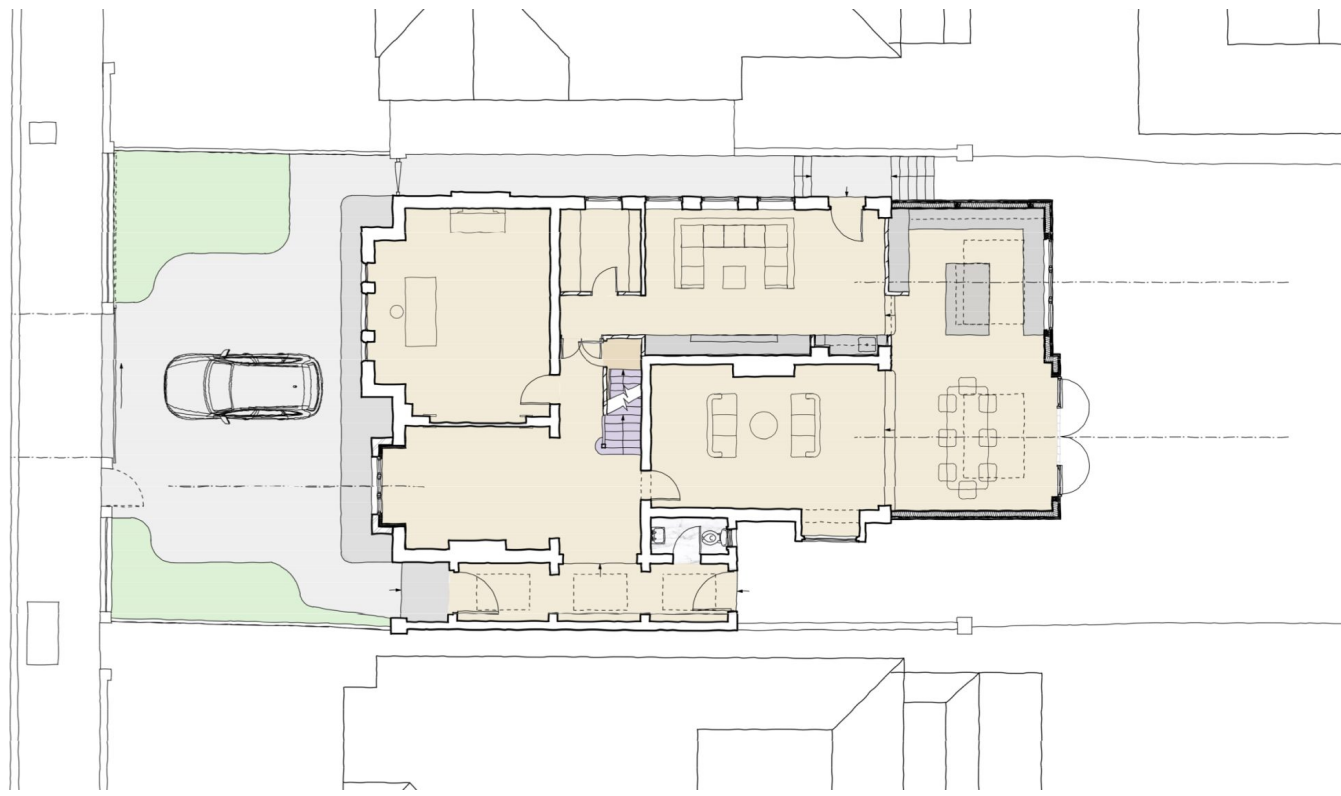
USE

*Residential*

CLIENT

*Private*





## Contemporary alterations in a Conservation

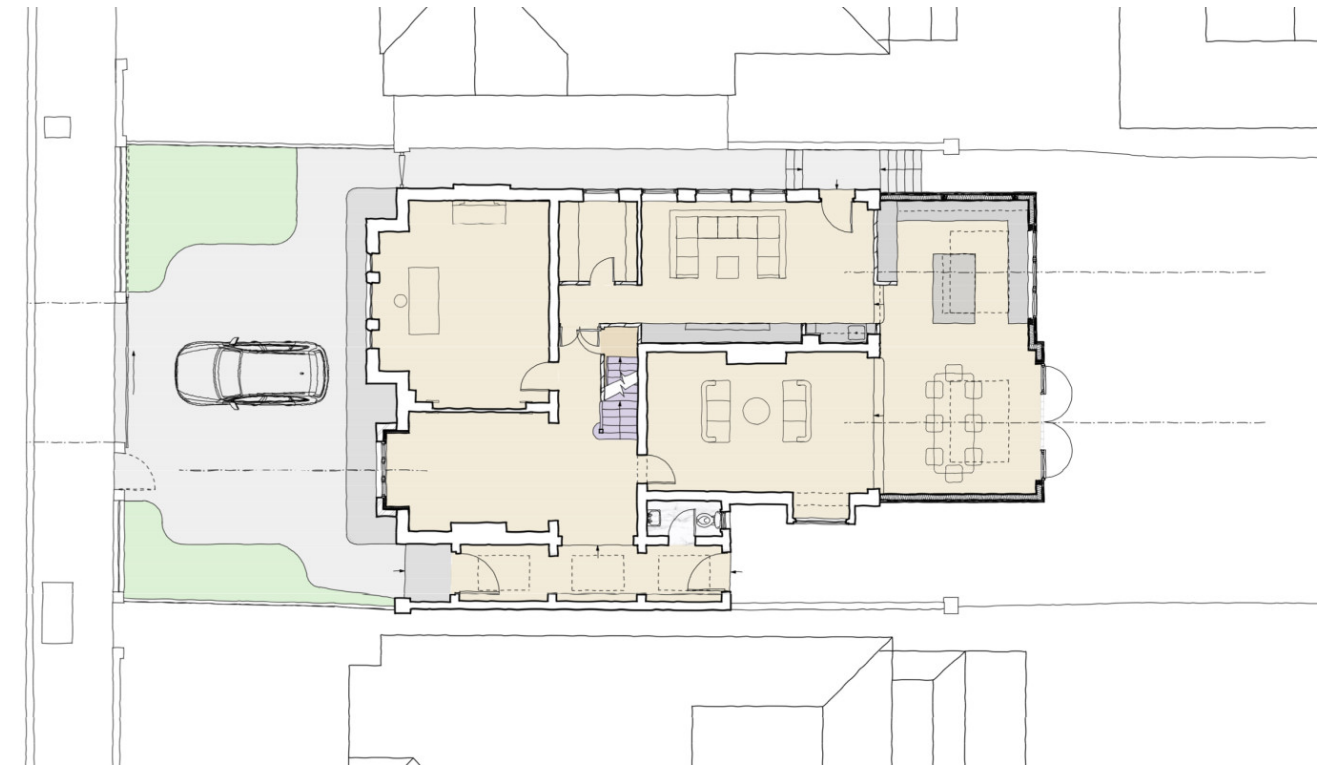
# area context

The existing house was a large, detached 19th Century family home in the Mount Park Conservation Area.

Our proposals, for which we obtained planning consent and prepared detailed technical design information, were to reorganise and expand the house to better suit the contemporary lifestyle of our clients large family.

We formed a new front entrance porch, taking design cues from similar bays in the area. An unsympathetic non-original rear extension was removed and a large new rear extension inserted to provide a grand kitchen and dining area, with terraces above accessed from the rear bedrooms.

The internal staircase was repositioned in order to improve the light and accommodation on the bedroom floors, including creation of a new master suite on the first floor and bedrooms and utility spaces on the second floor.



We formed a new front entrance porch, taking design cues from similar bays in the area. An unsympathetic non-original rear extension was removed and a large new rear extension inserted to provide a grand kitchen and dining area, with terraces above accessed from the rear bedrooms.

The internal staircase was repositioned in order to improve the light and accommodation on the bedroom floors, including creation of a new master suite on the first floor and bedrooms and utility spaces on the second floor.

We formed a new front entrance porch, taking design cues from similar bays in the area. An unsympathetic non-original rear extension was removed and a large new rear extension inserted to provide a grand kitchen and dining area, with terraces above accessed from the rear bedrooms.

The internal staircase was repositioned in order to improve the light and accommodation on the bedroom floors, including creation of a new master suite on the first floor and bedrooms and utility spaces on the second floor.

The development is located in Ealing, West London.

