

Oakfield Road Amalgamation and Refurbishment, Crouch End

Amalgamation and transformation of an upper floor maisonette apartment and roof terrace.

LOCATION

Crouch End, London N4

STATUS

Completed

USE

Residential

CLIENT

Private





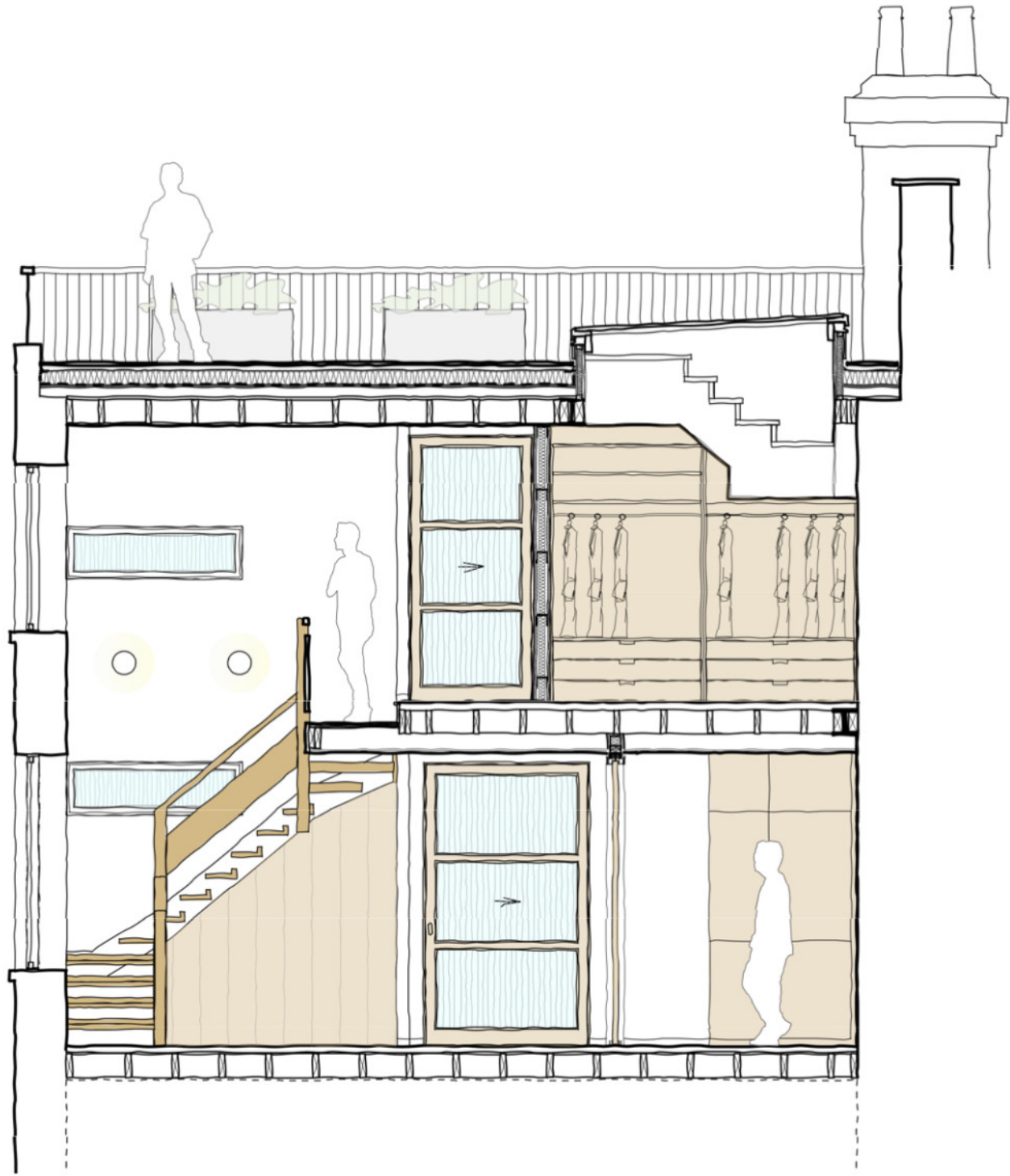






Amalgamating two flats to create a stunning maisonette apartment

This project was for the amalgamation and transformation of the first and second floor flats of an existing three storey building in Crouch End in to a beautiful, light filled maisonette apartment with a stunning roof terrace with views across London.





A dramatic double height circulation space

The apartment is arranged around a dramatic double height circulation space which visually connects the various rooms through the use of new internal windows and glazed doors. A refined, limited palette of high quality materials such as oak, ribbed glass, terrazzo and brass ironmongery have been used throughout the flat in order to create functional, orderly spaces that will serve as a backdrop to the clients artwork and furniture.

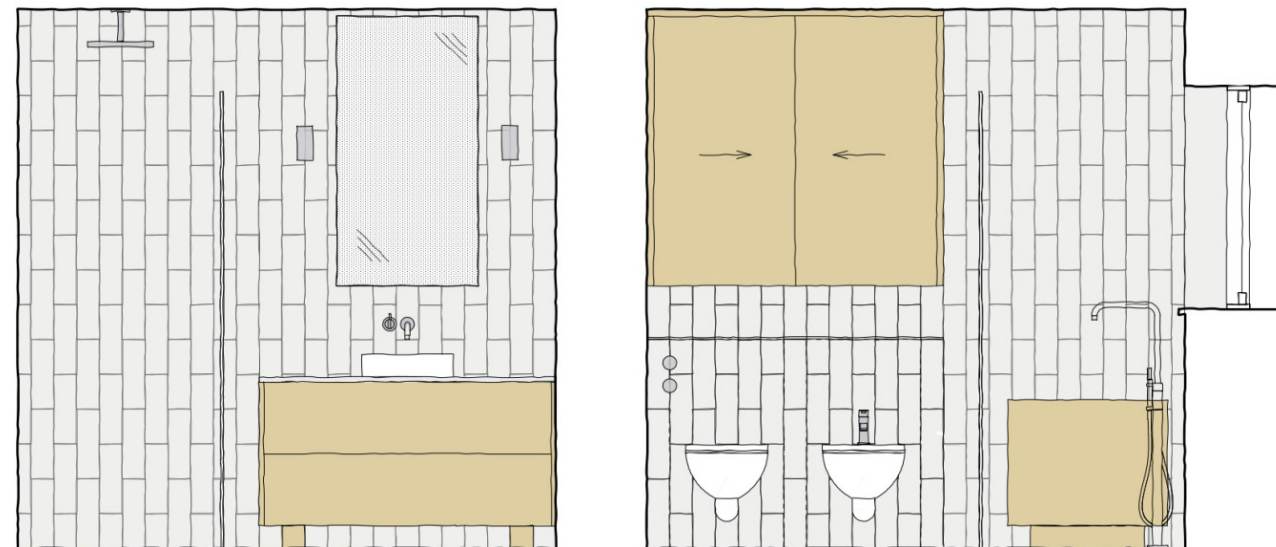
New structural elements and services have been carefully incorporated into the new floors, partitions and bespoke fitted joinery elements.



Kitchen

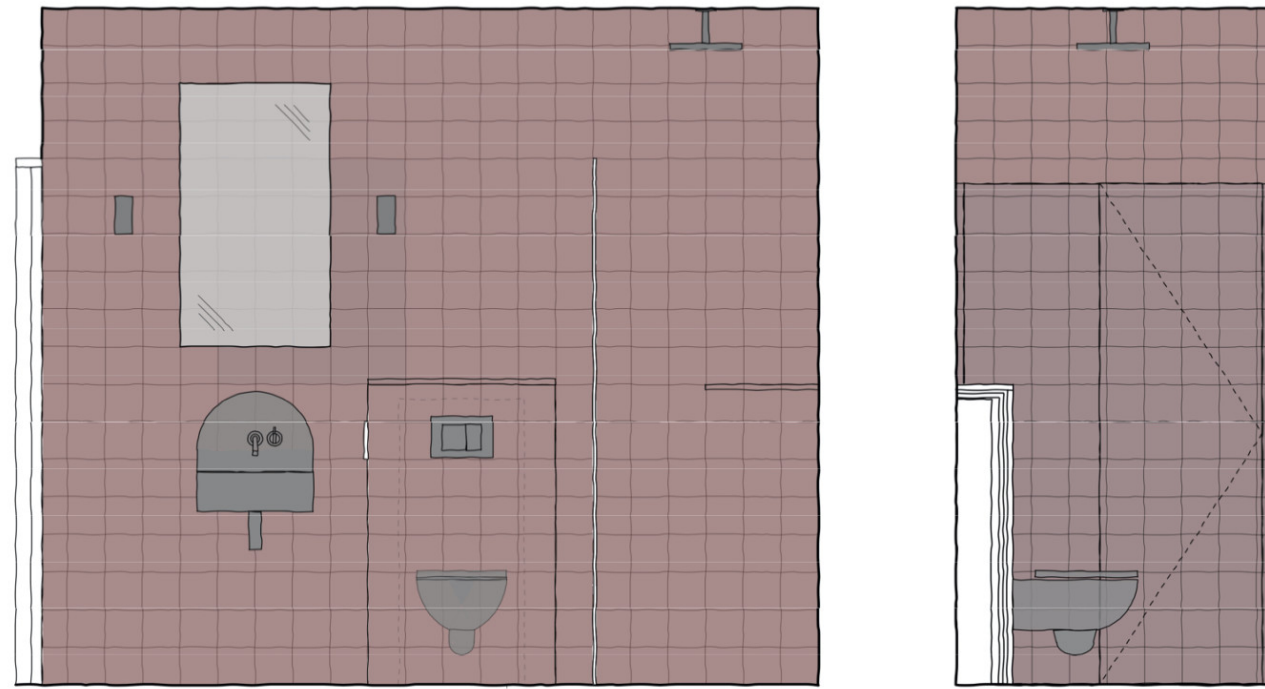
The kitchen is fully bespoke with the cabinetry in birch ply, fronts in a combination of rich oak and light grey vinyl with terrazzo worktops and splashbacks.

Light comes in from three sides, the rebuilt mansard sash window with a new custom window seat, the new sash window in the flank elevation, and an internal window bringing borrowed light from the entrance staircase atrium.



Ensuite Bathroom

The en-suite bathroom is a light filled space with marble tiles, marble terrazzo floor and vanity basin, contrasted with a pale wood Japanese bath and matching vanity unit joinery.



Shower Room

The shower room in contrast embraces the lack of natural light through the use of dark, rustic quarry tiles, a coloured concrete basin and black WC pan.



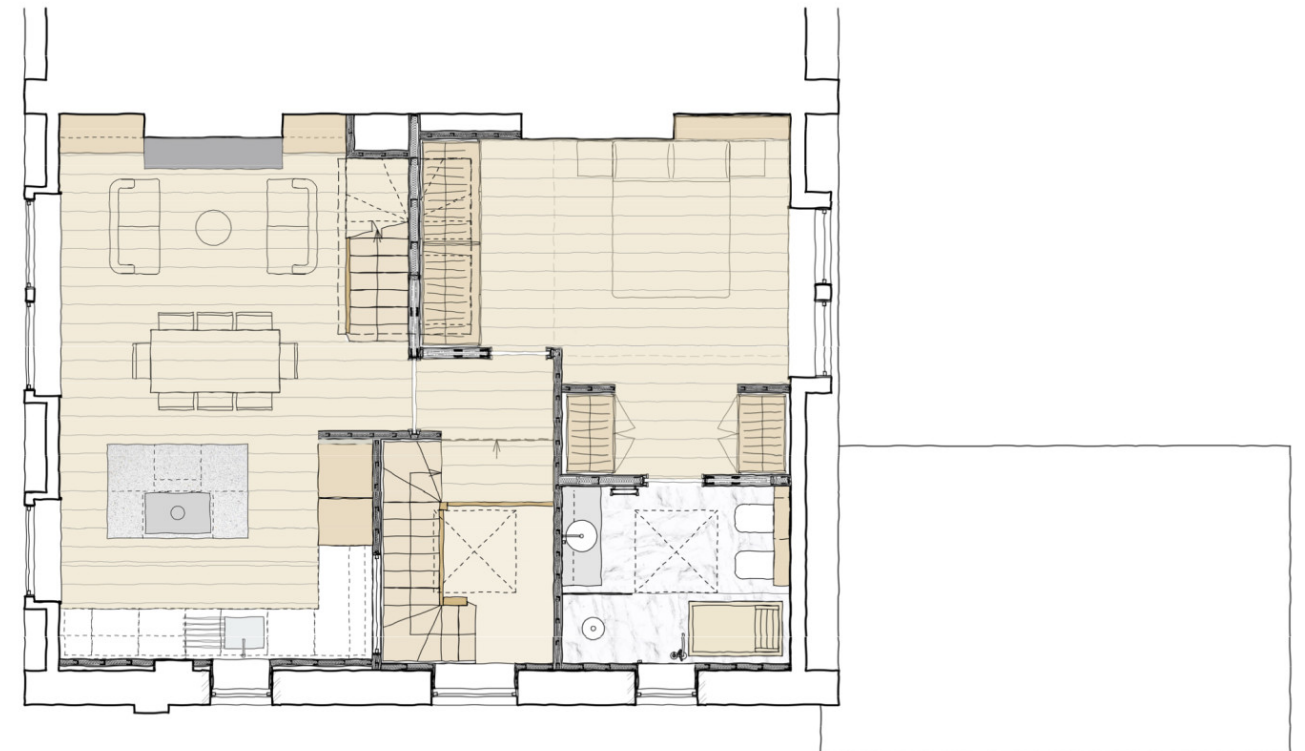
Custom joinery design

The project includes custom fitted joinery throughout the apartment, including the kitchen, wardrobes, utility room and study joinery pictured here.

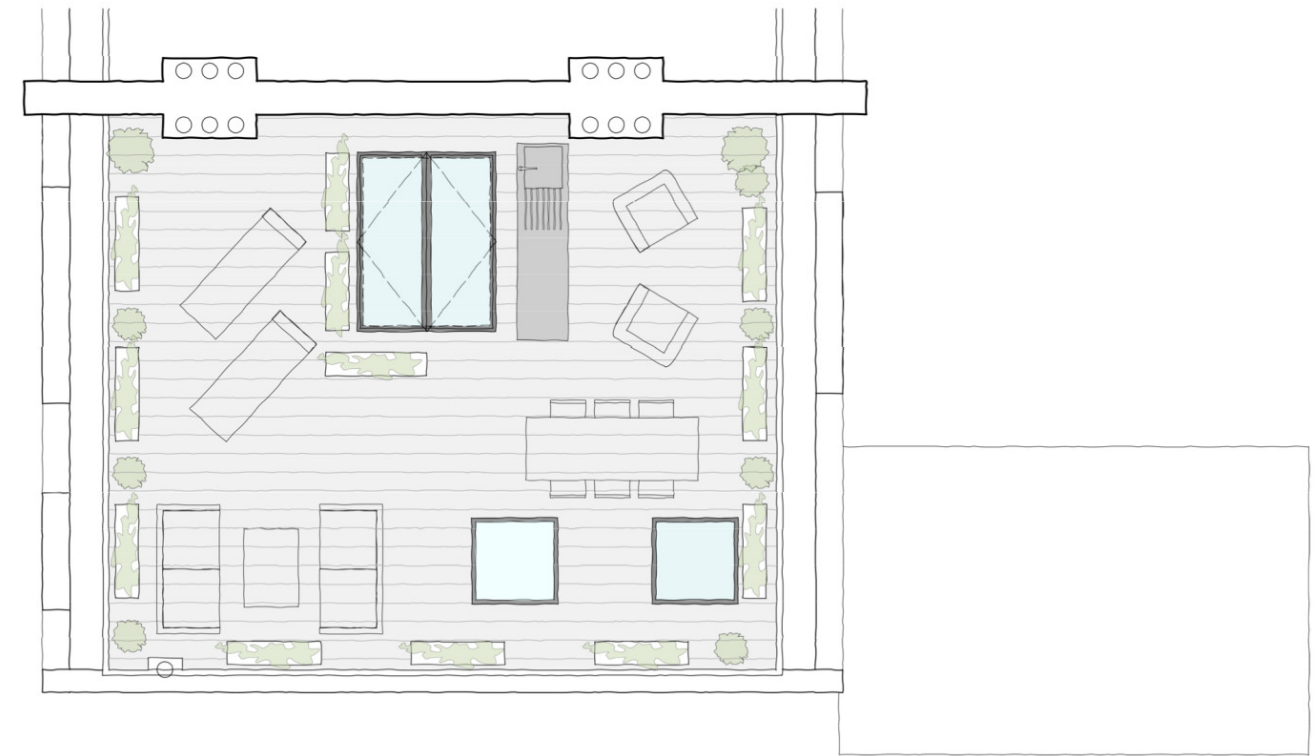
Our clients originally owned the second floor flat with roof terrace over and the opportunity arose to purchase the first floor flat below. They approached us to seek our ideas on the design potential for combining the flats as well as the planning policy considerations and strategy to obtain planning consent for an amalgamated maisonette apartment as well as external alterations including new window openings and improved access for use of the roof terrace.



Our clients originally owned the second floor flat with roof terrace over and the opportunity arose to purchase the first floor flat below. They approached us to seek our ideas on the design potential for combining the flats as well as the planning policy considerations and strategy to obtain planning consent for an amalgamated maisonette apartment as well as external alterations including new window openings and improved access for use of the roof terrace.



Our clients originally owned the second floor flat with roof terrace over and the opportunity arose to purchase the first floor flat below. They approached us to seek our ideas on the design potential for combining the flats as well as the planning policy considerations and strategy to obtain planning consent for an amalgamated maisonette apartment as well as external alterations including new window openings and improved access for use of the roof terrace.



Quietly luxurious with a contemporary feel

We worked closely with our clients to incorporate their ideas on materials, look, feel and detailing in to our design proposals for a for a quietly luxurious and luminous apartment which has both a contemporary feel as well as distinct references to mid-century modernism.

An example of the close collaboration to interpret and implement our clients design thinking are the ensuite bathroom and shower room spaces which are dramatically different to each other.

Accessing the roof terrace through a custom opening rooflight

Access to the reconfigured roof terrace is via a new staircase in the kitchen/dining room through an opening glass box rooflight. The roof terrace design incorporates flat rooflights sitting flush with the roof decking in order to create a simple canvas for the clients plants to be arranged around as well as a backdrop to the dramatic views across London.

Overseeing the construction and finishing of the project

We have overseen the detailed design, specification, procurement and construction stages of the project.

Our services included procurement of the main contractor and their joinery specialist and subsequently overseeing the construction and finishing of the project. The construction process involved detailed discussions and refinement of the design of the fitted joinery, internal doors and staircase with the contractors specialist sub-contractors.

The detailed coordination with the contractor of all of the various specialist trades and suppliers has been key in order to realise the original design intent.

The development is located in Crouch End, London.









