

Mount Avenue Extension and Alterations, Ealing

Contemporary extensions and alterations to a detached Victorian house.

LOCATION

Ealing, London W5

STATUS

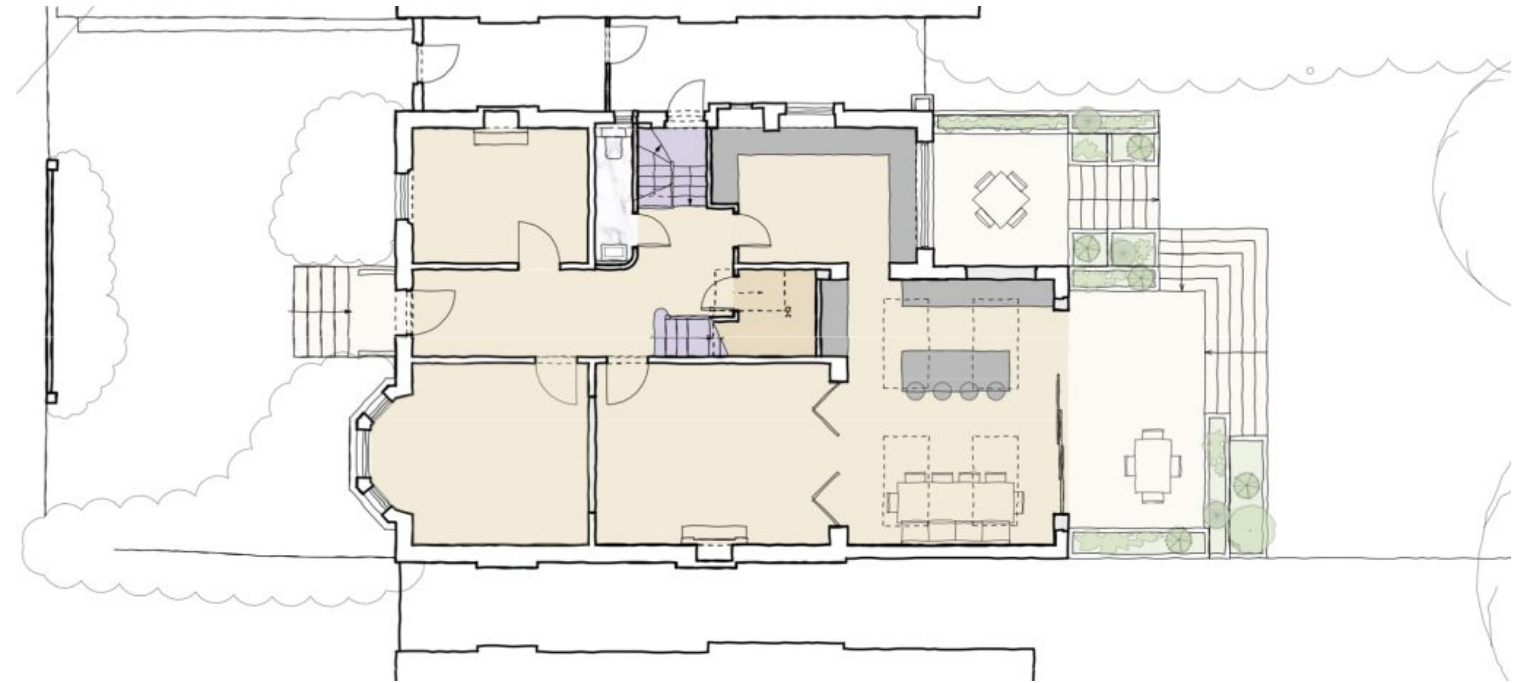
Detailed design

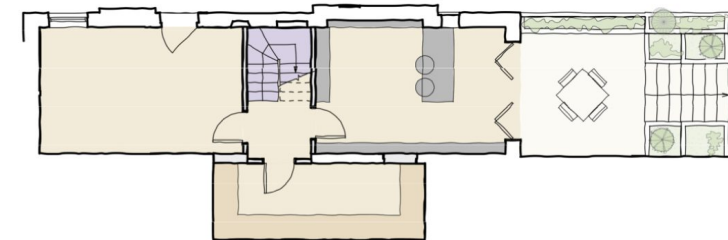
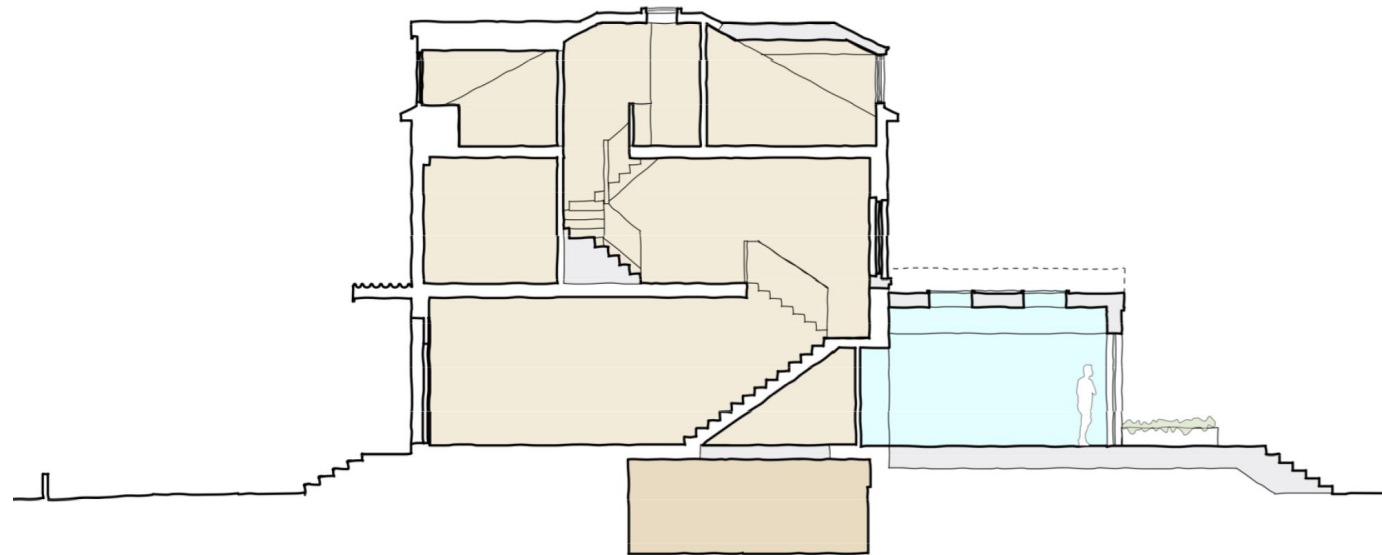
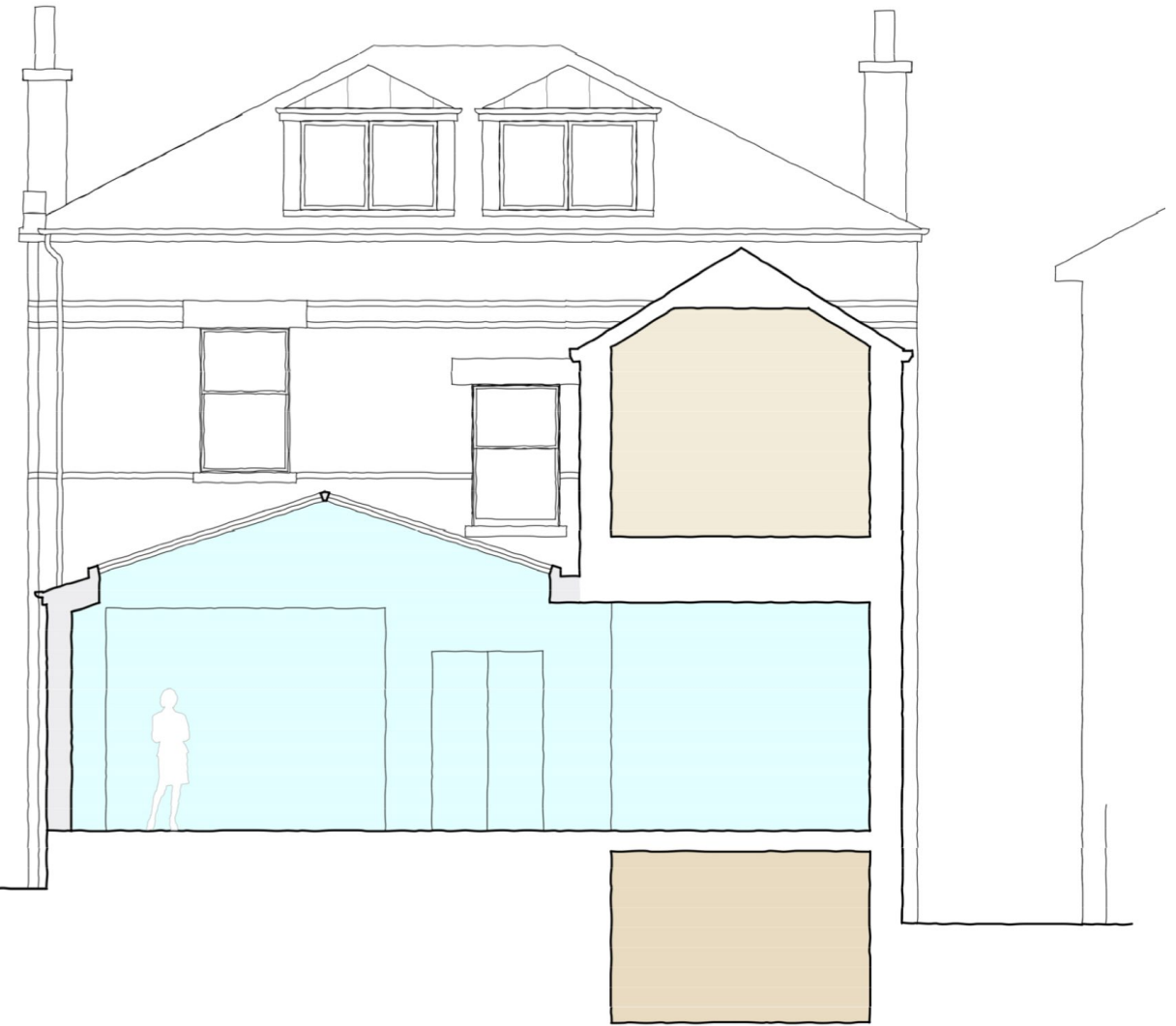
USE

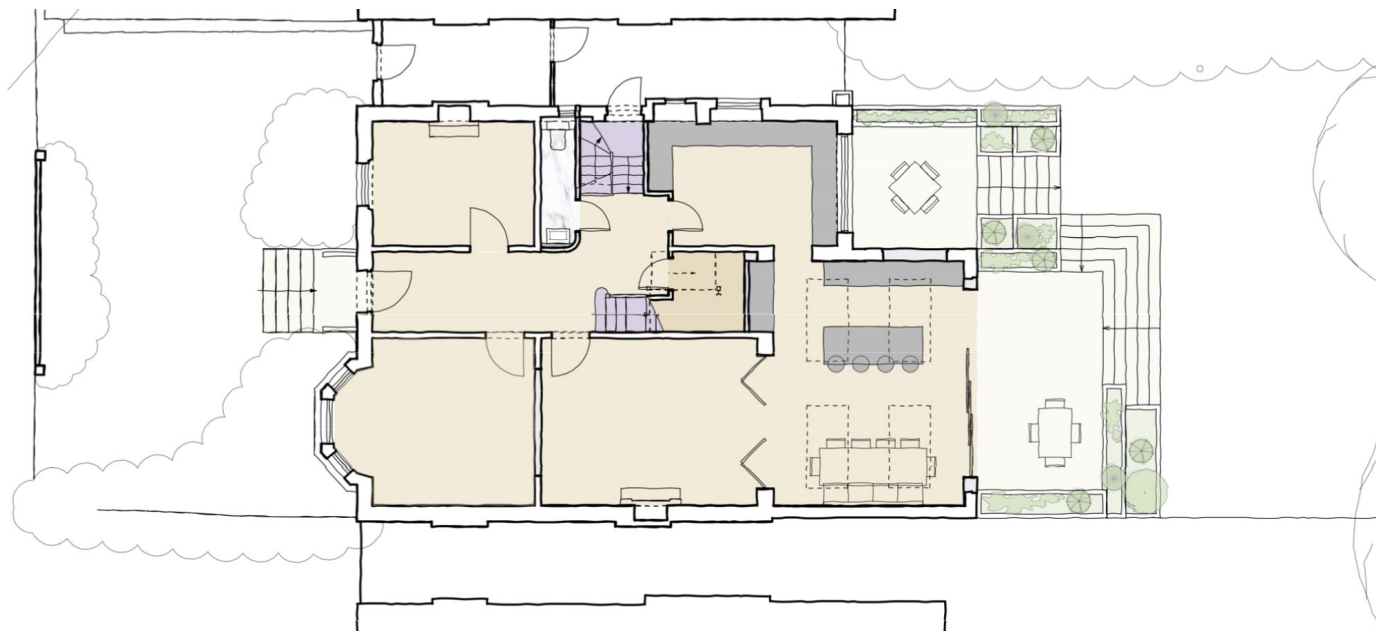
Residential

CLIENT

Private







Adapting and improving the house for contemporary living

Our clients approached having purchased this four storey detached Victorian house in the Montpelier Park Conservation Area. The house is locally listed and part of a grand group of similar houses, each with decorative front elevations and large rear gardens.

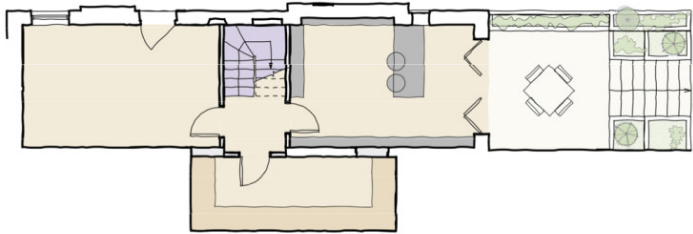
The house included an unsympathetic non-original rear extension consisting of a large uPVC glass lantern within a flat roof with a fully glazed wall facing out on to the rear garden.

Our design proposals were to create new spaces for home working, improving the family kitchen/living/dining spaces and improving the bedroom spaces on the upper floors.

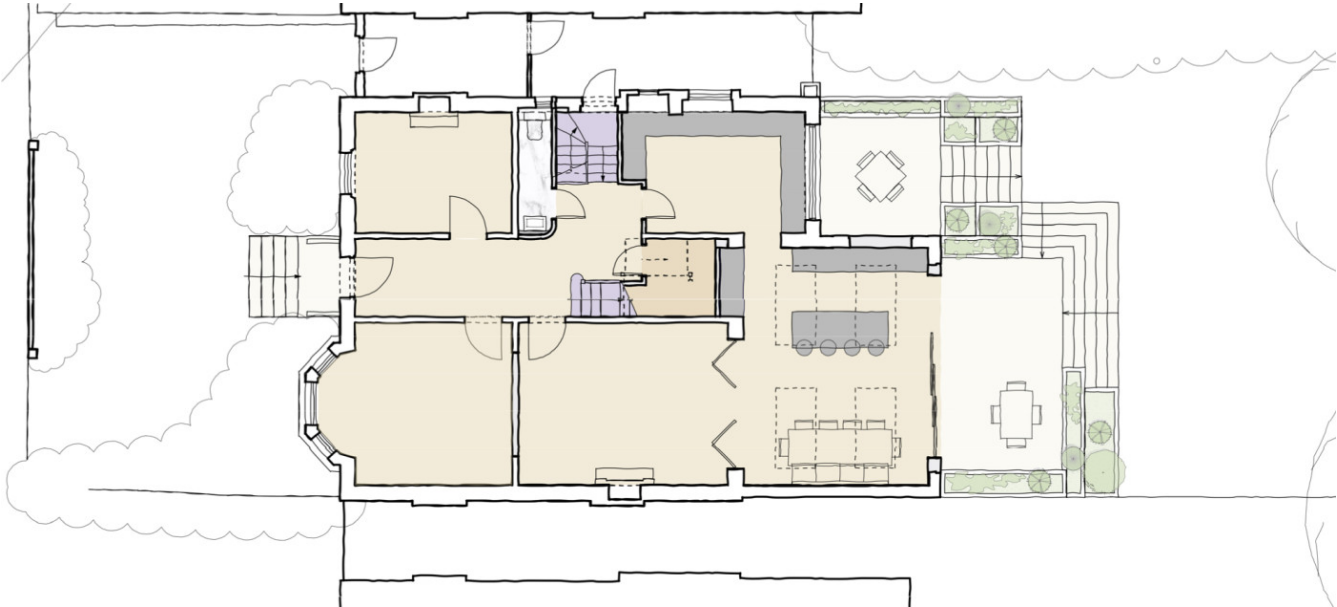
Our services included the initial concept feasibility studies, planning application and technical design for pricing and construction.



A new staircase was inserted to the basement and the layout reconfigured to create a new study with access out to a lower patio connected to the garden via terraced steps and planters.

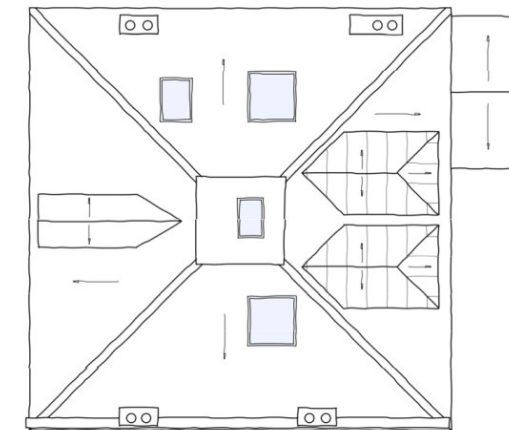
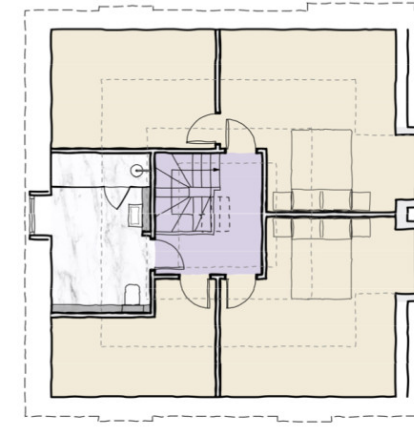


We removed the existing rear extension and replacing it with a contemporary pitched roof extension to create an open plan kitchen and dining area and improved access to the rear garden.



The bedroom spaces on the first floor were reorganised and a new staircase inserted up to the second floor. This, as well as the replacement of the small existing dormer with larger new zinc clad dormer allowed us to maximise the usable bedroom floor area on the top floor of the house.





The development is located in Ealing, West London.

