

# Wilton Row, Belgravia

Substantial rebuilding and fitting out of Belgravia mews house to create a high-end market sale house.

## LOCATION

*Westminster, London SW1X*

## STATUS

*Completed*

## USE

*Residential*

## CLIENT

*Treasury Invest Ltd*

## STAIRCASE & JOINERY

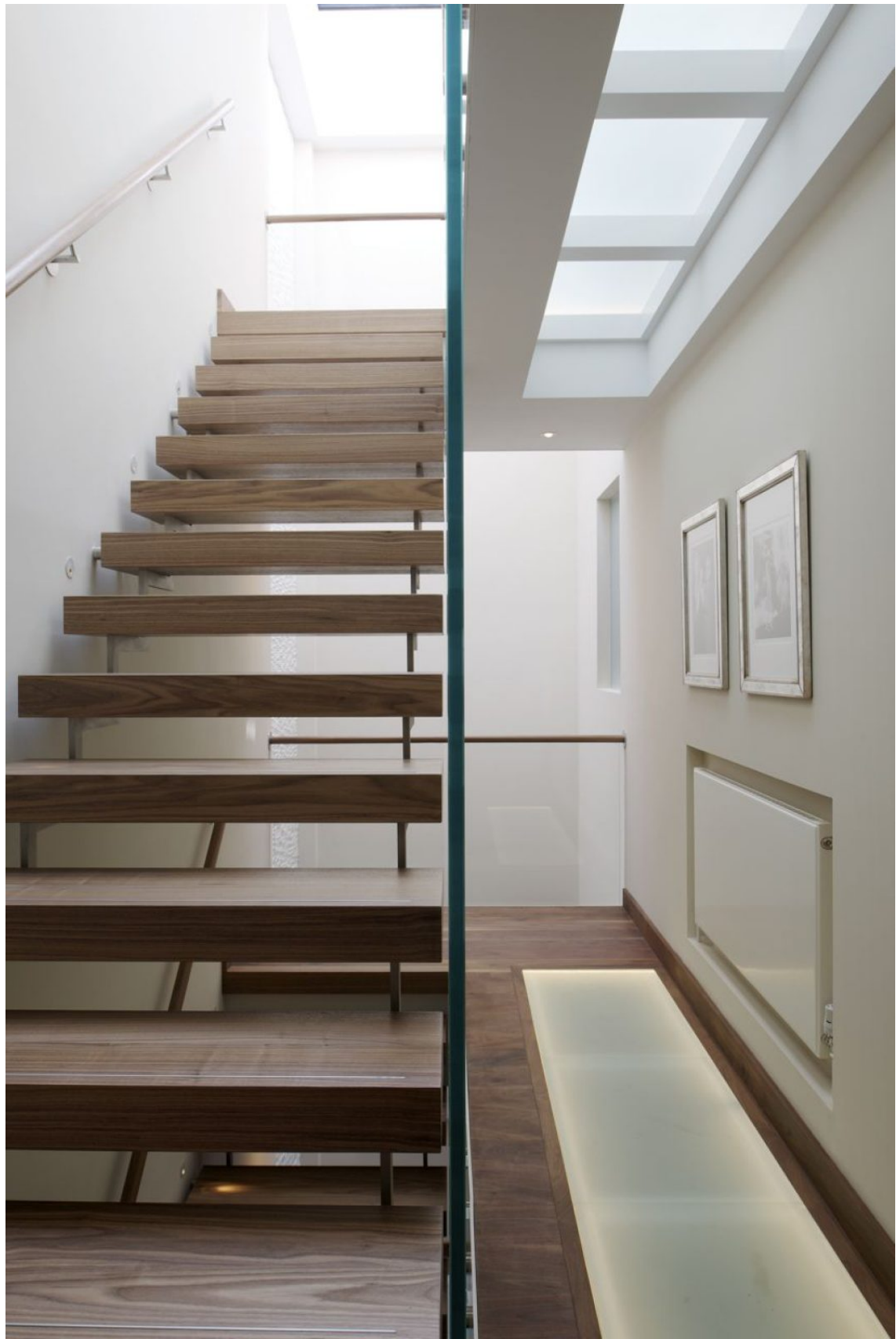
*Tin Tab Ltd*

## CONTRACTOR

*Velmead Contracts Ltd*











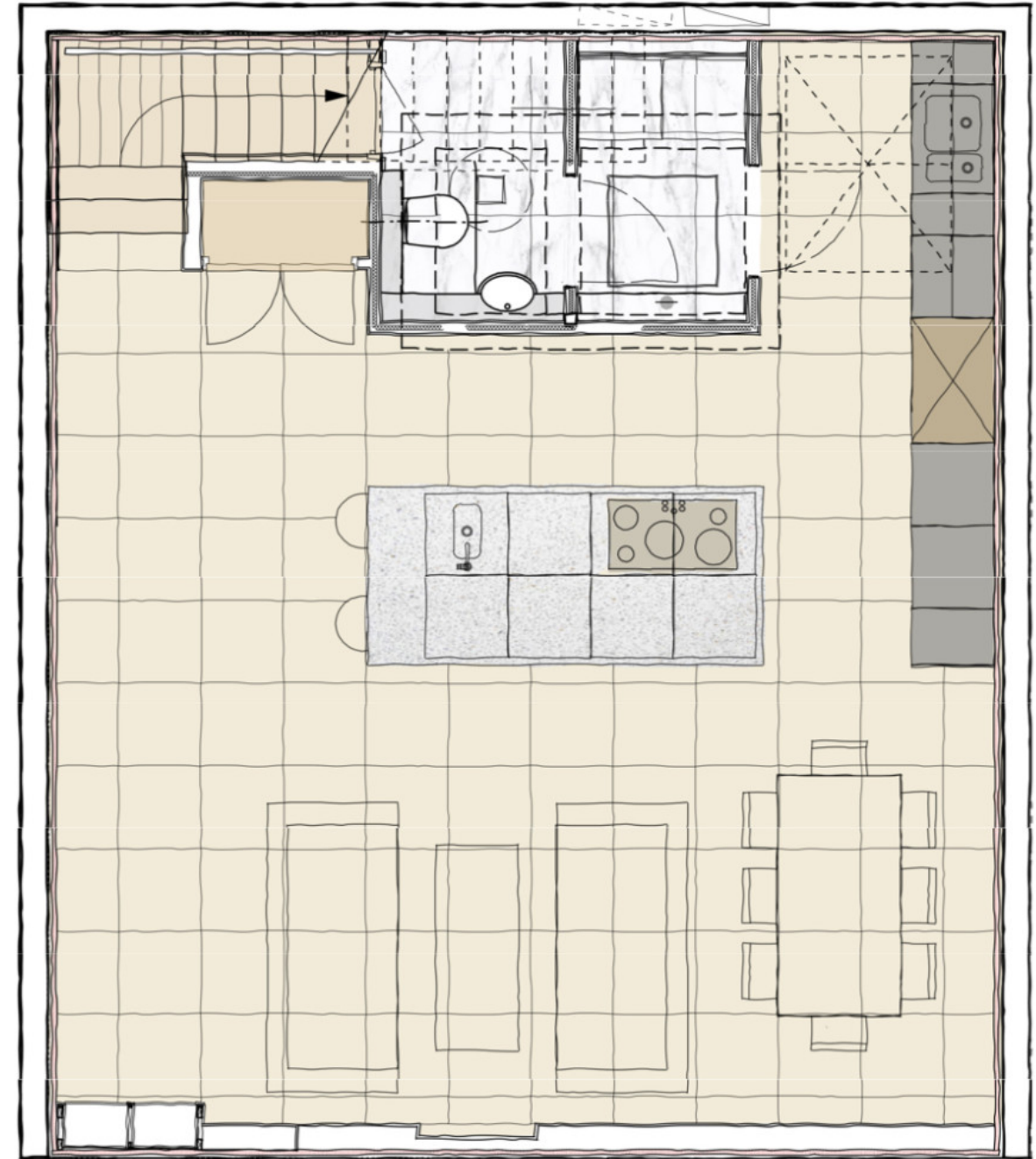


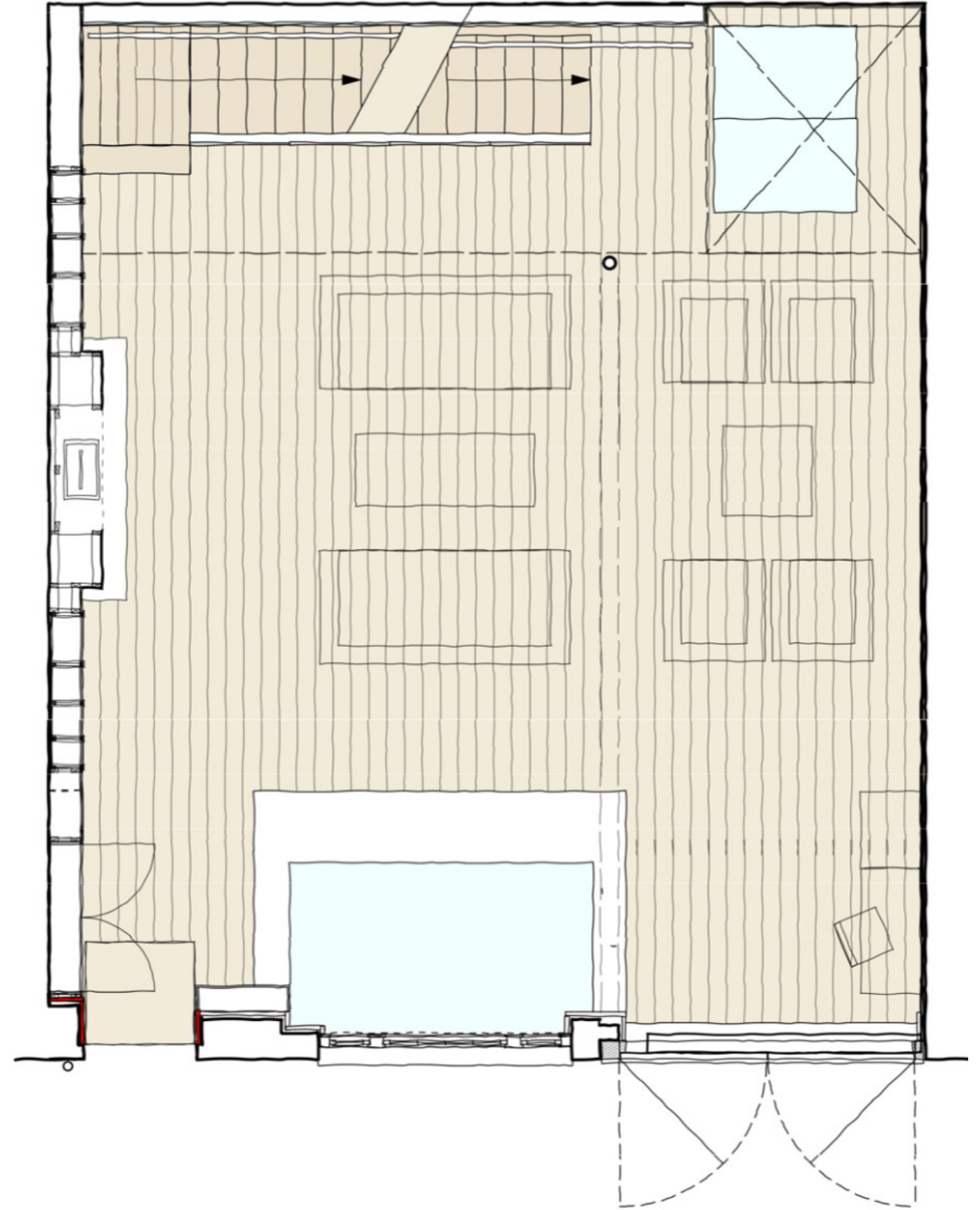


# Creating a light filled luxurious family home

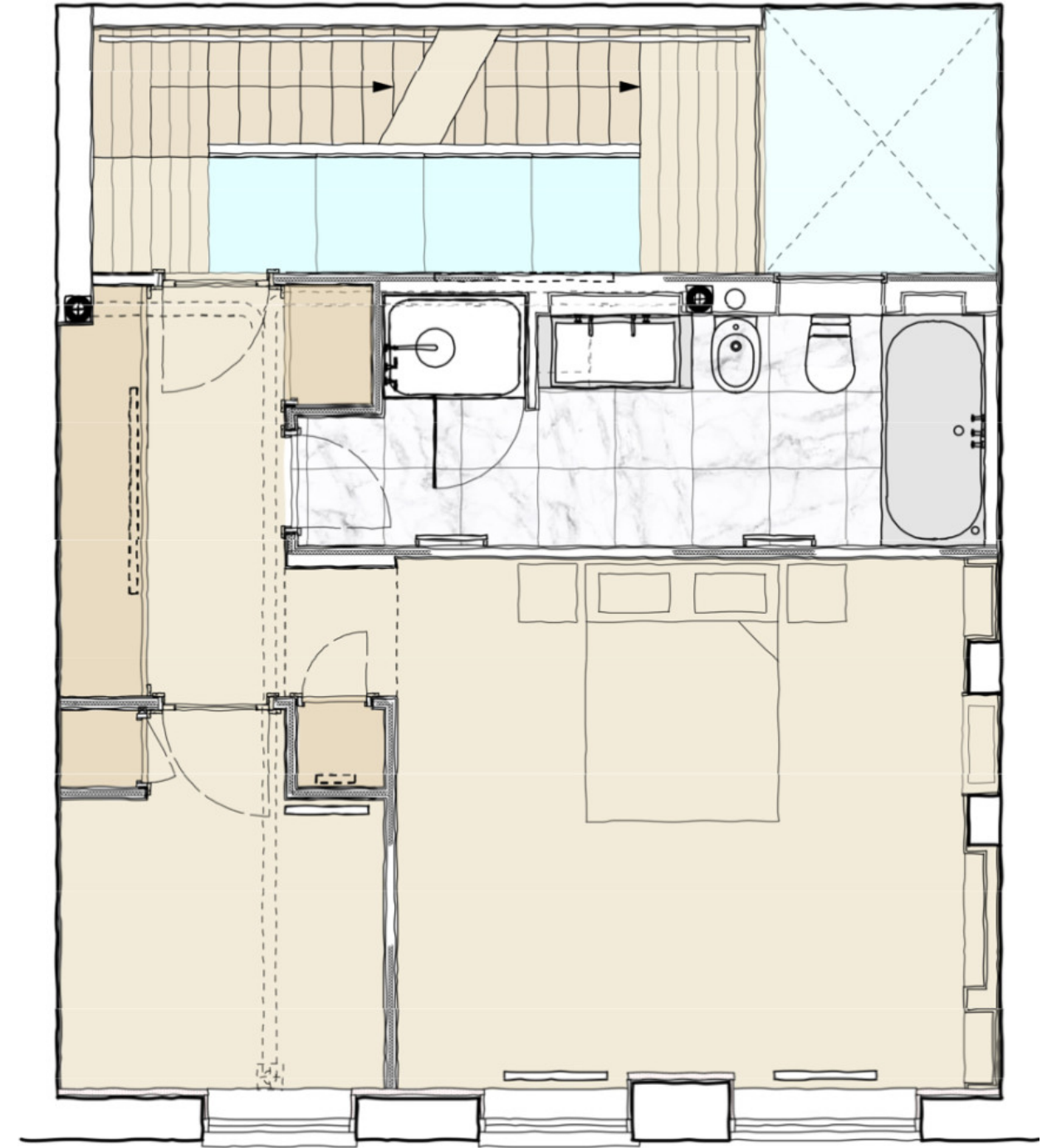
This project comprised the substantial rebuilding and fitting out of a Belgravia mews house, including insertion of a new basement, to create a high-end contemporary house for sale.

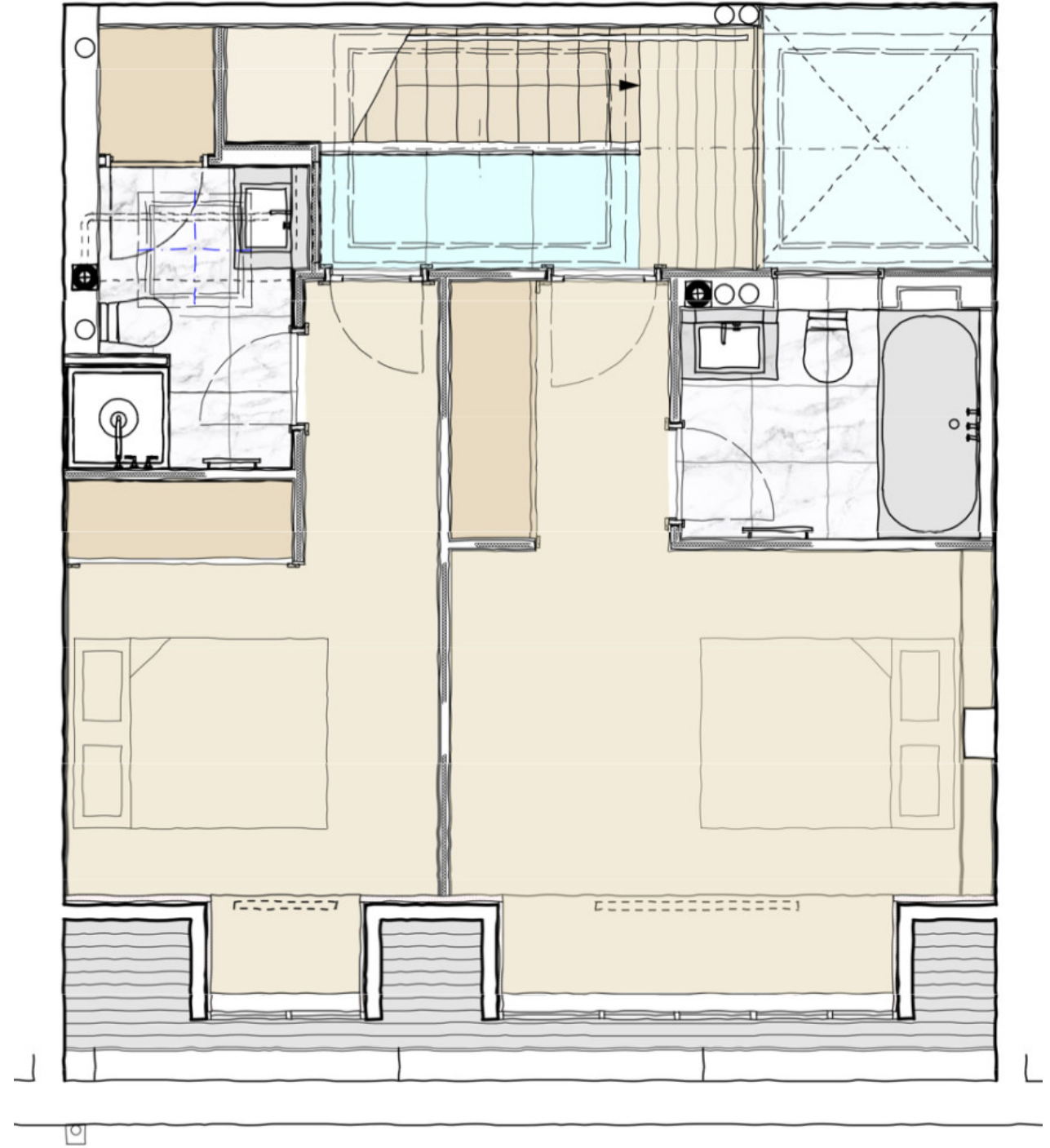
The house has only one external aspect, its front elevation. Key to the success of the design was the insertion of an open staircase along the rear wall with the stair acting as a light well, bringing light along the rear wall to all floors of the house, through large glazed openings in the roof above the stairwell, glass floor landings and an internal 'atrium'.



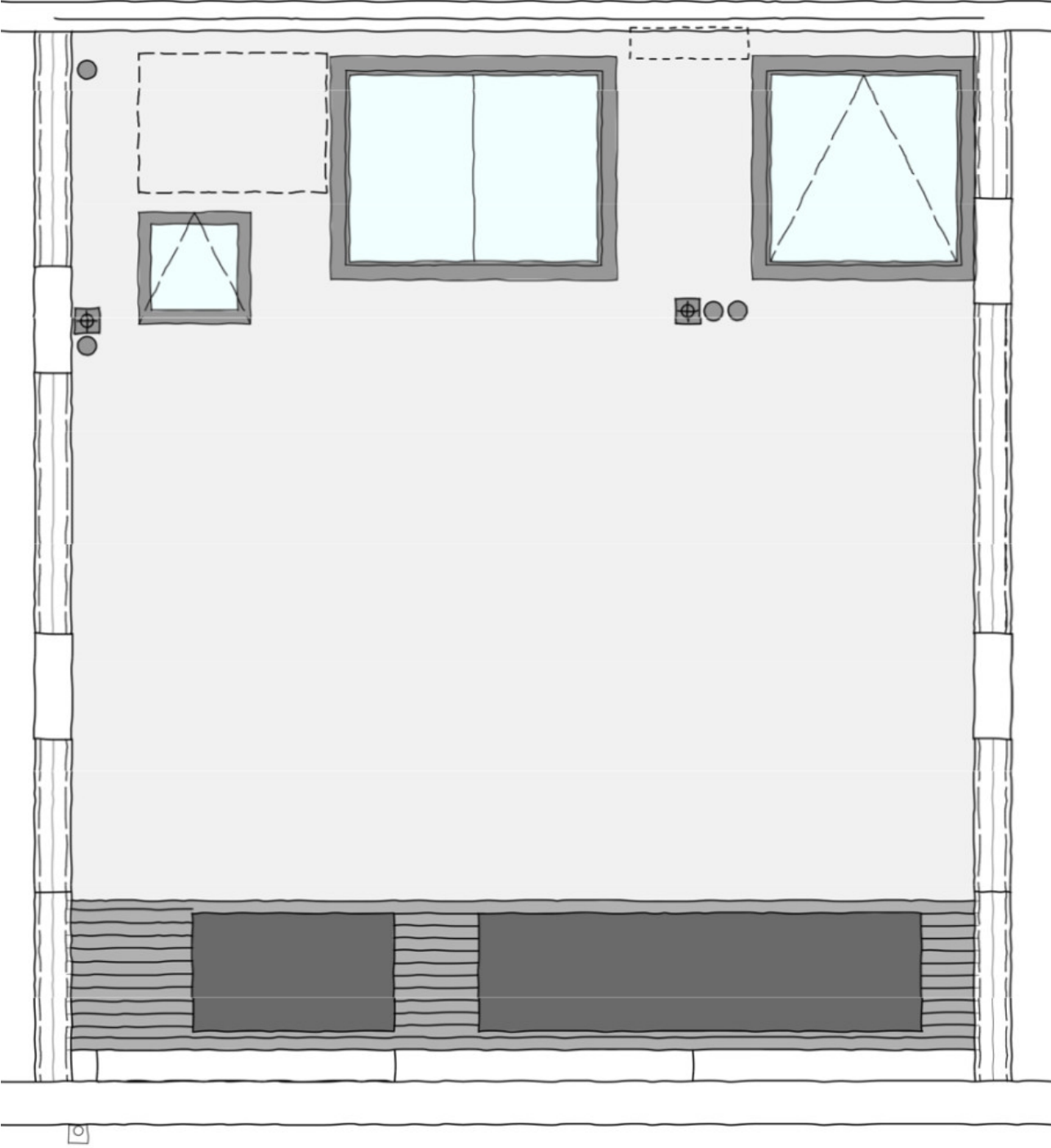












Open plan ground floor living space facing the mews frontage

Rear of ground floor living space with staircase and atrium

Basement kitchen dining space with light from cutout in ground floor above

Our services included detailed design and specification of the architectural interiors

The development is located in Belgravia, London.



